



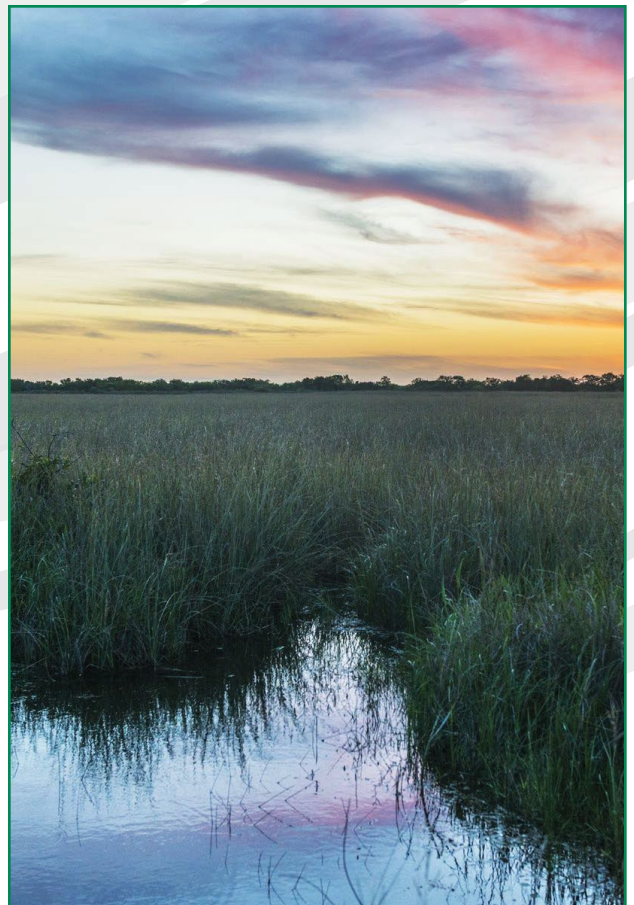
TYPE II PORTLAND LIMESTONE CEMENT

TITAN FLORIDA Type II Portland-Limestone Cement is a blended hydraulic cement manufactured with up to 15% finely ground limestone under strict quality and production controls for consistent product performance.

- Extensively tested
- Controlled production
- Superb performance in harsh environments
- Excellent crack reduction qualities
- Consistent performance
- Characteristics desired by finishers



*Produced in an Energy Star Certified facility.



TYPE II: PORTLAND LIMESTONE CEMENT



RECOMMENDED USES

Type II Portland-Limestone Cement can be specified for all concrete construction jobs, including projects that may require the concrete to withstand exposure to harsh environmental conditions.

SPECIFICATIONS AND QUALITIES

Type II Portland-Limestone Cement meets or exceeds the requirements of ASTM C595/C595M and AASHTO M240.

INSTRUCTIONS

Concrete mixtures incorporating Type II Portland-Limestone Cement can be proportioned in accordance with ACI 211.1, Standard Guide for Selecting Proportions for Normal-Density and High-Density Concrete. The use of trial batches before use is recommended to confirm concrete performance.

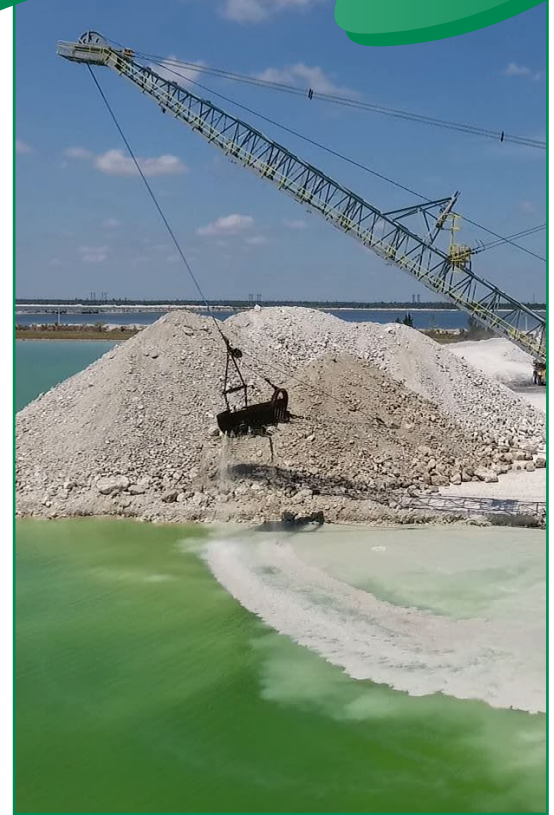
Titan Florida Portland-Limestone Cement TYPE II

PROPORTIONAL MIXING GUIDELINES	
Ingredients (Ingredientes)	Parts by Volume (Partes por Volumen)
Cement (Cemento)	1
Sand (Arena)	2
Gravel or Stone (Gravilla)	3

- The one bag mix referenced in the table above will yield 5.17 cubic feet or 15 square feet of concrete at 4 inches thick
- Use no more than 5-1/2 gallons of water per bag of cement
- Mix thoroughly and cure by keeping it damp for 4 to 7 days

ACCESSORY PRODUCTS

Aggregates, chemical admixtures, fly ash, slag cement, and other supplementary cementitious materials can be added to meet specific job requirements. Aggregates for concrete should be clean and free of chemicals, coatings of clay, or other fine materials that may affect the hydration and bond of the cement paste. Potable water is required.



KEEP OUT OF THE REACH OF CHILDREN

Titan Florida
11000 NW 121st Way
Medley, FL 33178
866-907-0994

For additional information or to obtain Safety Data Sheets, please visit www.titanamerica.com or call Customer Resources at 866-907-0994.



*Produced in an Energy Star Certified facility.